

A high-speed photograph of a water splash, showing intricate patterns of water droplets and bubbles. The water is captured in mid-air, creating a dynamic and textured scene. The background is a light, neutral color, making the blue and white tones of the water stand out.

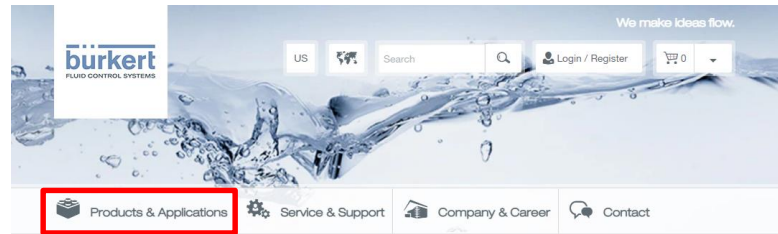
# Customizing Products

6/2/2022

**bürkert**  
FLUID CONTROL SYSTEMS

# Where to start?














- <https://www.burkert-usa.com/en>
- <https://www.burkert-usa.com/en/products/process-and-control-valves?n=1>



Welcome to the world of Bürkert Fluid Control Systems.  
Bürkert is one of the world's leading manufacturers of measurement and control systems for liquids and gases.



# Navigating the options

 Products & Applications	 Service & Support	 Company & Career	 Contact
Products	Customised Solutions	Your Fluidic Challenge	
 Solenoid Valves	 Microfluidic Valves and Pumps	Engineer together	Flow
 Process and Control Valves	 Mass Flow Controllers	Your benefit	Level
 Electromotive Valves	 Solenoid Control Valves	Applications	Pressure
 Pneumatics and Process Interfaces	 Additional Products	Customer references	Dosing
 Sensors, Transmitters and Controllers			Mixing
			Temperature
			Filtration
			Analysis

# Navigating the options

- Process and Control Valves
- Shut-off Valves (On/Off)
- Control Valves
- Hygienic / Pharma / Speciality
- Process Valves
- Process Valve Automation
- Accessories



## Process and Control Valves

### Shut-off Valves (On/Off)

- [Angle Seat Valves](#)
- [Diaphragm Valves](#)
- [Globe Valves](#)
- [3-Way Process Valves](#)
- [Robotlux \(Multiport valves\)](#)
- [Ball Valves](#)
- [Butterfly Valves](#)
- [Pneumatic Control](#)
- [Disc Valves](#)



### Control Valves

- [Globe Valves](#)
- [Diaphragm Valves](#)
- [Angle Seat Valves](#)
- [Ball Valves](#)
- [Butterfly Valves](#)
- [Positioners / Process Controllers](#)
- [Disc Valves](#)



# Choose your Adventure

Process and Control Valves 

- Shut-off Valves (On/Off) 
  - Angle Seat Valves
  - Diaphragm Valves
  - Globe Valves
  - 3-Way Process Valves
  - Robolux (Multiport valves)
  - Ball Valves
  - Butterfly Valves
  - Pneumatic Control
  - Disc Valves
- Control Valves
- Hygienic / Pharma / Speciality Process Valves
- Process Valve Automation
- Accessories

Process and Control Valves 

- Shut-off Valves (On/Off)
- Control Valves 
  - Globe Valves
  - Diaphragm Valves
  - Angle Seat Valves
  - Ball Valves
  - Butterfly Valves
  - Positioners / Process Controllers
  - Disc Valves
- Hygienic / Pharma / Speciality Process Valves
- Process Valve Automation
- Accessories

Process and Control Valves 

- Shut-off Valves (On/Off)
- Control Valves
- Hygienic / Pharma / Speciality Process Valves
- Process Valve Automation
- Accessories 
  - Silencers / Mufflers
  - Position Feedback

# Pneumatic Element Control valve?

## Control Valves

### Globe Valves

[Pneumatic](#)  
[Electromotive](#)



### Angle Seat Valves

[Pneumatic](#)  
[Electromotive](#)



## Positioners / Process Controllers

[Top Control](#)  
[Side Control](#)



# Or Electric?

- <https://www.burkert-usa.com/en/products/process-and-control-valves/shut-off-valves-on-off/angle-seat-valves/electromotive>



## Electromotive 2 way globe control valve ▶

Type 3361

- High precise and fast flow control
- Several Kvs value per port size due to removable valve seats
- Weather, impact and vibration resistant design
- Easy cleaning by its design according hygienic demands
- Position controller and process controller available

Show 1459 related articles ▼

# Time to get Specific with your “flavor”

## Pneumatic

Add a filter?

Function

Media & Calibration

Process Connection Type/Size

Materials

Process Pressure / Temperature

+ Add Filters



# Add your “Toppings”

Ready to find the right products even faster?

Adding some filters will often help in selecting the correct products for your application in even less time.

All filter groups

Set Filters: 0/49

The screenshot displays a web-based product selection interface. At the top, there are six filter category buttons: 'Function', 'Media & Calibration', 'Process Connection Type/Size', 'Materials', 'Process Pressure / Temperature', and 'Sealing Material'. The 'Function' button is currently selected and highlighted with a dark blue arrow pointing downwards. Below the buttons is a 'Collapse all filters' toggle switch, which is currently turned off. Underneath, three filter selection panels are visible: 'Fluidic port connection number' with a radio button selected for '2 (3602)'; 'Valve function number of switching positions' with radio buttons for '2 (3895)' and '3 (69)'; and 'Control function' with radio buttons for 'A - normally closed (NC) (3067)', 'B - normally open (NO) (816)', and 'I - double-acting (81)'. At the bottom left, it says 'Filters (0)'. At the bottom right, there is a blue button labeled 'Apply Filters (3964 results)'.

Filters (0)

Apply Filters (3964 results)

# Dial in you Kv/Cv

Function (1)

Process Connection Type/Size (2)

Process Pressure / Temperature

Sealing Material (1)

Standards and Regulations

Orifice size (Kv value)

Collapse all filters

**Kv value (water)** ▲

24.5 m3/h

7.1 22 37

**Cv value** ▲

28 gal/min

8.3 26 43.1

**Seat size** ▲

- 20 mm (3/4") (9)
- 25 mm (1") (7)
- 32 mm (1 1/4") (3)
- 40 mm (1 1/2") (13)
- 50 mm (2") (11)

# Here's your Valve, how about a Top?

## Pneumatic

 Show article list

Article

2/2-way-globe control valve ▶

\$4,840.00

Article number 275103  
Type 2301

 Check availability and price

Process control valves | Globe valve | 0,00 bar - 6,00 bar | -10,00 °C -  
130,00 °C | 2 - A - normally closed (NC) | PTFE (Polytetrafluorethylene) |  
Stainless steel | Weld end

Add to comparison

 Add to cart

# Same as Valve Selection

## Positioners / Process Controllers

[Top Control](#)  
[Side Control](#)



Ready to find the right products even faster?

Adding some filters will often help in selecting the correct products for your application in even less time.

All filter groups

Set Filters: 0/49

- Control Unit / Feedback
- Function
- Process Connection Type/Size
- Voltage / Frequency
- Process Pressure / Temperature
- Standards and Regulations
- Orifice

Collapse all filters

<b>For Actuator size 40 mm</b> <input type="radio"/> No (402)	<b>For Actuator size 50mm</b> <input type="radio"/> Yes (11) <input type="radio"/> No (391)	<b>For Actuator size 63mm</b> <input type="radio"/> Yes (3) <input type="radio"/> No (399)	<b>For Actuator size 70mm</b> <input type="radio"/> Yes (120) <input type="radio"/> No (282)
<b>For Actuator size 80mm</b> <input type="radio"/> Yes (99) <input type="radio"/> No (303)	<b>For Actuator size 90mm</b> <input type="radio"/> Yes (120)	<b>For Actuator size 100mm</b> <input type="radio"/> Yes (99)	<b>For Actuator size 125mm</b> <input type="radio"/> Yes (88)

# Valve Assembly Terminology For Angle seat

Type 2100

Type 2300



Angle Seat  
Valve

Type 8801-YE



Valve with pn.  
Control Unit

Type 8801-YE



Valve with  
Control Head

Type 8802-YG



Valve with  
Positioner  
Process  
Controller

Valve body is the same as for type 2000/2702

# Valve Assembly Terminology For Globe valves

Type 2101

Type 2301



Globe Valve

Valve body is the same as for type 2012/2712

Type 8801-GC



Valve with pn.  
Control Unit

Type 8801-GC



Valve with  
Control Head

Type 8802-GD



Valve with  
Positioner /  
Process  
Controller

# Valve Assembly Terminology

## Automation Unit (AU)



Pneumatic Control Unit  
type 8690



Control Head  
type 8691



Positioner / Process  
Controller  
type 8692/ 8693/ 8694

## Adapter Kit



Adapter for type 8690



Adapter for type 8691-8694

## Process Valve Actuator D70 – D130



Angle seat valve



Globe valve

# Valve Assembly Terminology

Automation Unit  
(AU)



Control Head  
type 8695



Positioner BASIC  
type 8696

Adapter Kit



apter for type  
8695-8696

Process Valve  
Actuator D50



Angle seat valve



Globe valve



# Burkert FreshAIR Advantage

Actuator spring chamber is always filled with clean control air

Water, humidity, cleaning chemicals or dust are not sucked in

- ➔ No corrosion of the actuator springs... Vastly increased life cycle !!!
- ➔ No dust or dirt inside the actuator... Vastly increased life cycle !!!
- ➔ No humidity finds its way to the feedback unit / control head / positioner via the spindle extension
- ➔ No contamination by germs / biological growth inside the actuator
- ➔ No ice crystals

Valid for process valve systems

ELEMENT

On/Off

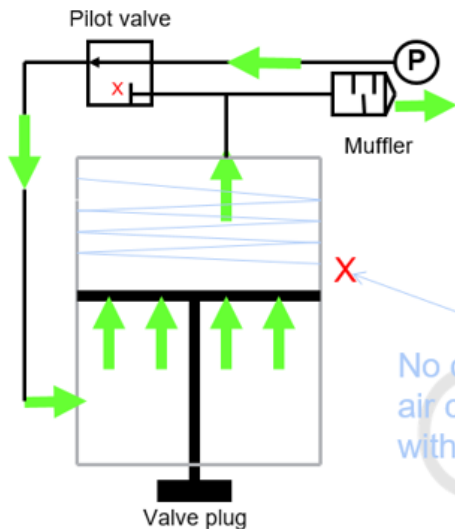


ELEMENT

continuous control

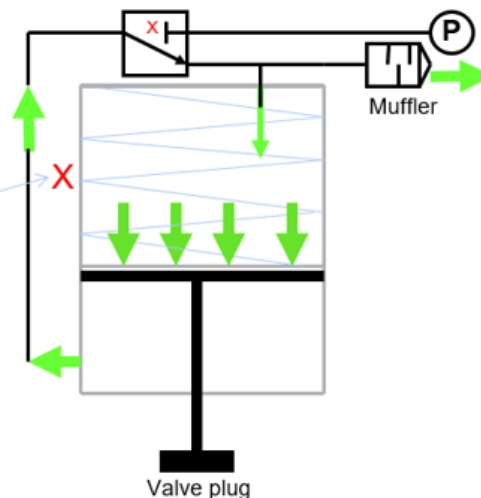


# Burkert FreshAIR Advantage



When the pilot valve is energized, compressed plant air is forced into the actuator which overcomes the spring pressure and lifts the valve plug off of the seat. Air in the spring chamber is pushed out through the muffler

No contaminated ambient air can enter the actuator with the FreshAIR process



When the pilot valve de-energizes, compressed plant air is forced out of the actuator by the spring pressure and forces air the valve plug onto the seat. Unlike Classic and third party valves Burkert uses plant air exhausted from the chamber to fill the spring chamber

# Burkert FreshAIR Advantage

A tiny amount of pressurized instrument quality air is exhausted into the inside of the control top flushing the volume until the pressure relief valve settles at about 7 psi.

Over pressure avoids sucking in humidity in case of cold water cleaning or an ambient temperature change control air flushing prevents condensate inside the housing

